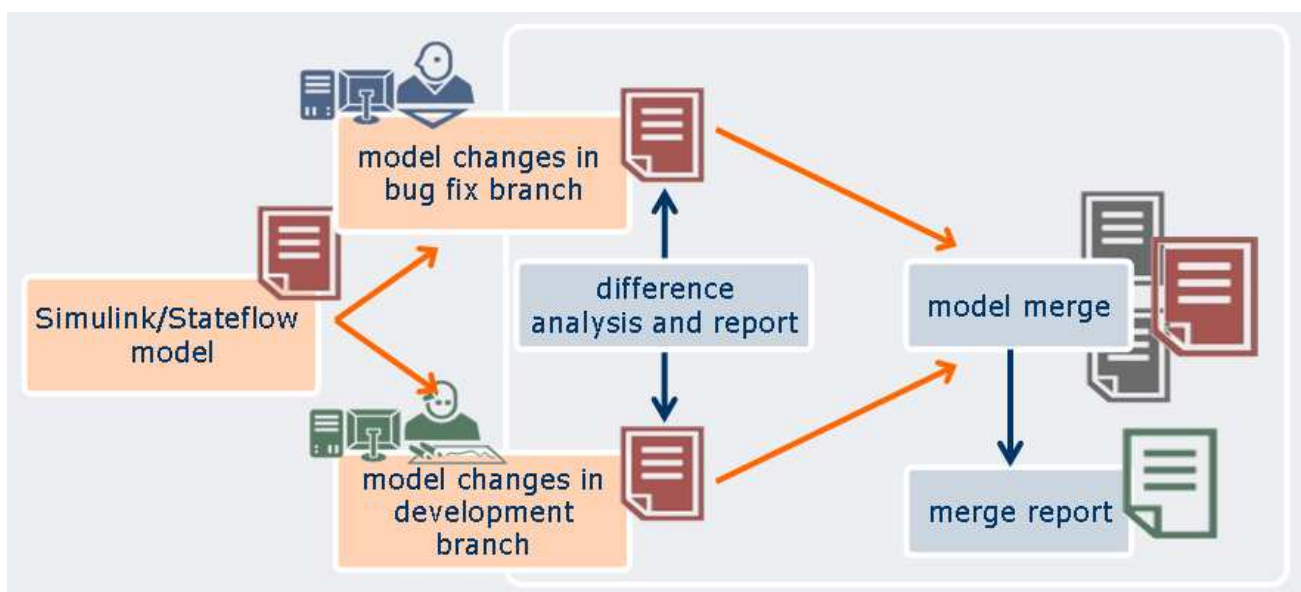




medini™ unite diff and merge for Simulink, Stateflow and TargetLink

- easily identify differences between Simulink, Stateflow or TargetLink models
- automated or manual merge into a target model
- provides a detailed graphical representation of the differences directly within the embedded Matlab®/Simulink® or Stateflow® models
- provides real team support and indicates conflicts, undo/redo of merge decisions
- integrates into versioning systems



difference analysis

- detailed comparison of Simulink®/Stateflow®/TargetLink models
- difference analysis includes configuration parameters
- presentation within the model diagrams and in the detailed property view
- 2-way and 3-way diff – take the ancestor model into account
- library diff – compare libraries on user request and directly from referencing model
- additional display of differences in a tree view
- generation of diff report in MS Word format including diagram pictures
- various filters control the visualization
- intuitive and convenient user interface
- intelligent element matching based on multiple criteria – name, position, connections
- visualization of differences in TargetLink properties

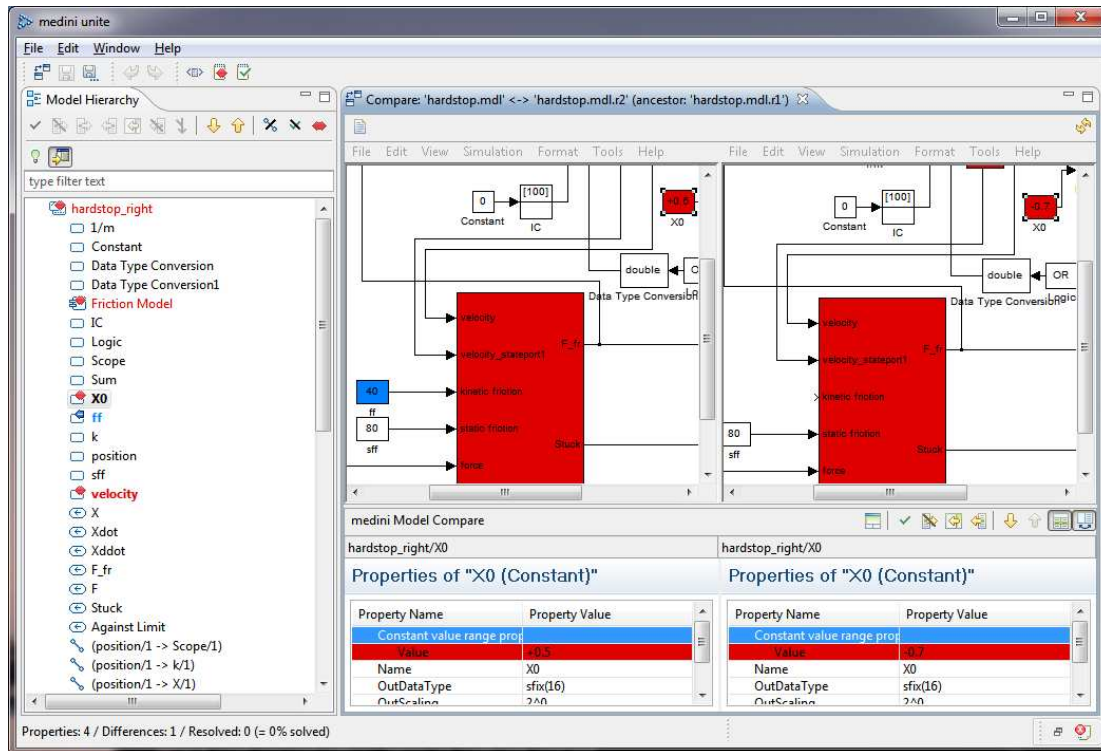
model merge

- support for merge of Simulink, TargetLink and Stateflow® elements
- sophisticated conflict management
- user controlled or automatic merge
- intelligent merge reduces manual effort by merging multiple elements with a single decision
- automatic merge uses ancestor model information
- easy to use user interface for merge decisions
- multi-level undo/redo
- customizable merge reports document all merge decisions in MS Word format
- easy integration into different versioning and configuration systems
- customizable color schemes
- comprehensive documentation and online help system





intuitive user interface



system requirements

supported platforms: Microsoft® Windows 2000/XP/Vista/7® (32/64-bit)
 required disc space: 100 MB
 recommended memory size: 2 GB
 recommended software: MATLAB®/Simulink®/Stateflow®; Microsoft® Word
 supported Simulink® Versions: 2006A and following (32/64-bit)

support and maintenance

ikv provides support for medini™ unite on the basis of individual maintenance service agreements. The maintenance for the first year is included in the purchase price. The services are available for supported hardware and operating systems as specified above or in the documentation accompanying the software. A registration at ikv's website is required to activate your maintenance services.

license and pricing policies

A fully functional time limited trial version of medini™ unite is available <http://www.ikv.de/mediuniunite/trial-registration>.

medini™ unite is available as full diff/merge version and as diff-only version.

medini™ unite is licensed as Node locked License, Network Floating License or Dongle License

price information and ordering

ikv++ technologies ag
 Dessauer Straße 28/29
 D-10963 Berlin, Germany
www.ikv.de – unite-sales@ikv.de

